

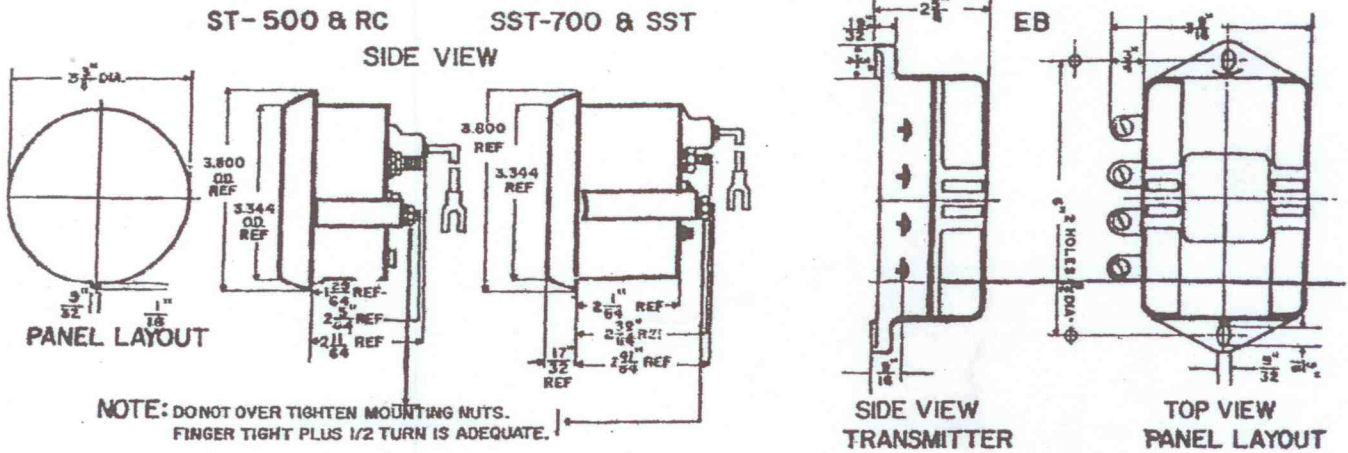
SUN TACHOMETER INSTALLATION INSTRUCTIONS.

ST-500 SERIES, SST-700 SERIES, MODELS RC, SST, AND TRANSMITTER EB

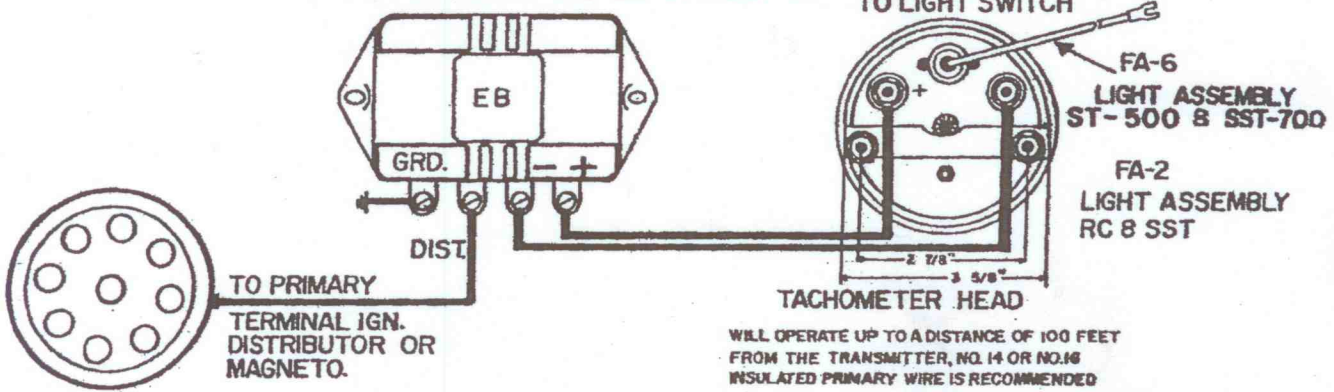
In addition to the standard or conventional type ignition systems, many makes and types of transistorized ignition systems are also available. To insure the proper and accurate function of your new Sun Tachometer, carefully review the following information.

These instructions contain information pertaining to most systems on the market. Most other systems are similar to those shown and will require like tachometer connections.

MOUNTING DETAIL



STANDARD IGNITION SYSTEM CONNECTION



TRANSISTOR IGNITION SYSTEMS

Connect your Sun Tachometer as indicated for the specific ignition system installed in your vehicle. Some transistor ignition systems do not utilize breaker points in the distributor.

Others may or may not provide a terminal to which your tachometer can be connected. When terminals are nonexistent, it will be necessary to splice into the vehicle's wiring loom.

SYSTEM	REFERENCE
Motorola TR-12N*	1
Precision Specialties 12V	1
Wico	1
Radatron	1
Prestolite 250	1
Tungsistor #12	2
Prestolite 201*	3
Delcotronic (Pulse Type)	4
Delco (Contact Controlled)*	4

SYSTEM	REFERENCE
Holley TPI*	5
Nell	6
Motion TI-1*	7
Mallory Photo Cell*	8
Ford H & A	9
Judson*	10
Mallory T-12N	10
Echlin T-38N	10

*6 Volt Transmitter must be used on this system.

SUN ELECTRIC CORPORATION

Harlem and Avondale

TACHOMETER DIVISION

Chicago, Illinois 60631 U.S.A.

